



Bernard Dewagtere

France, SIN LE NOBLE

O Holy Night (Cantique de Noël) Adam, Adolphe Charles

About the artist

Doctor in musicology, conductor and composer.

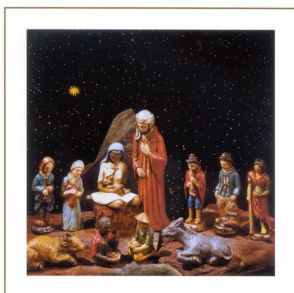
Compositions and arrangements from all eras, in all styles or musical genres and for any instrument or vocal training.

Qualification: PhD Musicology

Associate: SACEM - IPI code of the artist : 342990

Artist page : <https://www.free-scores.com/Download-PDF-Sheet-Music-bernard-dewagtere.htm>

About the piece



Title: O Holy Night [Cantique de Noël]

Composer: Adam, Adolphe Charles

Arranger: Dewagtere, Bernard

Copyright: Copyright © Dewagtere, Bernard

Instrumentation: Alto Saxophone or Clarinet (Eb), piano or organ

Style: Christmas - Carols

Comment: "O Holy Night" ("Cantique de Noël") is a well-known Christmas carol composed by Adolphe Adam in 1847 to the French poem "Minuit, chrétiens" (Midnight, Christians) by Placide Cappeau (1808?1877), a wine merchant and poet, who had been asked by a parish priest to write a Christmas poem.[1] Unitarian minister John Sullivan Dwight,[2] editor of Dwight's Journal of Music, created a singing edition based o... (more online)

Bernard Dewagtere on [free-scores.com](https://www.free-scores.com)

LICENSE

This sheet music requires an authorization

- for public performances
- for use by teachers

Buy this license at :

<https://www.free-scores.com/licence-partition-uk.php?partition=37826>



- listen to the audio
- share your interpretation
- comment
- pay the licence
- contact the artist

Prohibited distribution on other website.

Minuit, chrétiens - O Holy Night

Cantique de Noël

Adolphe Adam (1847)

Arr. : Bernard Dewagtere

Saxophone Alto

Piano

This system contains the first three measures of the piece. The Saxophone Alto part is in treble clef with a key signature of one sharp (F#) and a 12/8 time signature. It begins with a whole rest in the first measure, followed by a half note G4, a quarter note A4, and a half note B4 in the second measure. The third measure contains a half note C5, a quarter note B4, and a half note A4. The Piano part is in bass clef with a key signature of two flats (Bb, Eb) and a 12/8 time signature. The right hand plays a steady eighth-note accompaniment, while the left hand plays a half-note bass line.

Sax. Alt.

Pno

This system contains measures 4 through 6. The Saxophone Alto part continues with a half note G4, a quarter note A4, and a half note B4 in measure 4. Measures 5 and 6 continue the melodic line with half notes C5, B4, and A4. The Piano part maintains its accompaniment pattern, with the right hand playing eighth notes and the left hand playing half notes.

Sax. Alt.

Pno

This system contains measures 7 through 9. The Saxophone Alto part begins measure 7 with a half note C5, followed by a half note B4, a quarter note A4, and a half note G4. Measures 8 and 9 continue the melody. The Piano part continues with its accompaniment, featuring a more active right hand in measure 7 with sixteenth notes.

Minuit, chrétiens - O Holy Night

Sax. Alt.

2
10

Pno

10

This system contains measures 10 through 12. The Saxophone Alto part (top staff) begins at measure 10 with a melodic line in G major, featuring dotted half notes and eighth notes, with a slur over measures 10-12. The Piano part (bottom staves) starts at measure 10 with a treble clef staff playing a continuous eighth-note accompaniment and a bass clef staff providing a simple harmonic accompaniment with dotted half notes.

Sax. Alt.

13

Pno

13

This system contains measures 13 through 15. The Saxophone Alto part (top staff) continues the melodic line from measure 13, with a slur over measures 13-15. The Piano part (bottom staves) continues the accompaniment. The treble clef staff features more complex chords and triplets in measures 14 and 15, while the bass clef staff continues with dotted half notes.

Sax. Alt.

16

Pno

16

This system contains measures 16 through 18. The Saxophone Alto part (top staff) continues the melodic line from measure 16, with a slur over measures 16-18. The Piano part (bottom staves) continues the accompaniment. The treble clef staff features complex chords and triplets in measures 16 and 17, while the bass clef staff continues with eighth-note accompaniment.

Minuit, chrétiens - O Holy Night

19 3

Sax. Alt.

Pno

23

Sax. Alt.

Pno

27

Sax. Alt.

Pno

rit.