

Concerto in D minor

for two violins and strings (Viola)

Johann Sebastian Bach (1685-1750)

Vivace

Musical notation for a piece in B-flat major, 3/8 time. The notation consists of 12 staves of music. The key signature has two flats (B-flat and E-flat). The time signature is 3/8. The music features various rhythmic patterns, including eighth and sixteenth notes, and rests. Dynamics markings include 'p' (piano) and 'f' (forte). The notation is written in a standard musical staff with a treble clef.

2

66



70



76



83



Largo ma non tanto



4



8



12



16



20



24



28



33



37



42



46



p *f*

Allegro



6



12



19



27



34



40



45



52



60



68



74



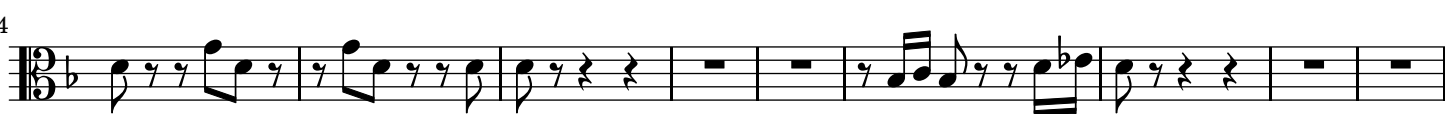
81



87



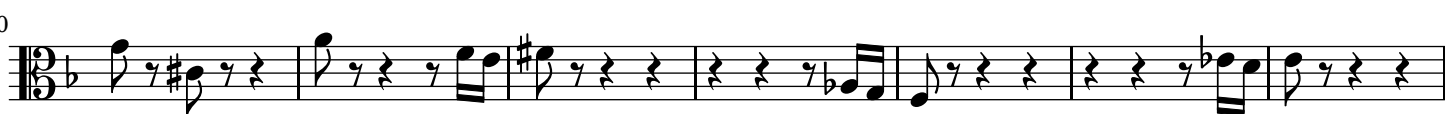
94



103



110



117



124



129



134



141



148

